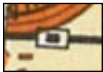


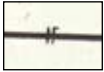
Key to symbols



double-track
railway and station



tramway or light
railway



double-track
electrified railway



aerial ropeway



station buildings to
one side of line



electricity
transmission line



railway signal



gas holders



disused railway



copse, open
space with trees



lawn, grassy open
space



European and UK
road numbers



cemetery



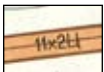
mixed forest



non-navigable
river (in lower
case)



ferry



dual carriageway
road and
annotation



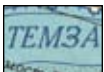
spot height



main road in
cutting



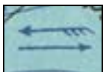
disused mine or
quarry



navigable river (in
upper case)



airport



tidal river: direction
of incoming tide,
direction of river
flow



important or
strategic object,
colour-coded on
map and listed in
index